



*Jordan fishwick*

**DIDSBURY**  
Riverside Court



## Riverside Court, Didsbury, M20 2UF

Auction Guide £180,000



### The Property

This property is for sale by Modern Method of Auction powered by iamsold LTD - Starting Bid £180,000+ Reservation Fee.

A STUNNING APARTMENT that has been REFURBISHED THROUGHOUT, with spacious living space to include TWO EXCELLENT DOUBLE BEDROOMS, a south westerly facing BALCONY, secure GATED PARKING and a GREAT LOCATION which is within easy reach of West Didsbury, Didsbury and Northenden villages. Numerous other noteworthy features include a lovely living room, modern kitchen with a comprehensive range of units and tiled contemporary bathroom with white suite, generous entrance hall with storage space, gas central heating and double glazing are both installed. The accommodation can be accessed from either the garden or car park entrances, where the gated allocated parking space can be found. No chain.

### Directions

M20 2UF



- Stunning apartment
- Two excellent double bedrooms
- Modern kitchen
- Generous living room & entrance hall
- South westerly facing balcony
- Gated allocated parking
- Re-fitted bathroom
- Close to Didsbury, West Didsbury & Northenden
- No onward chain

**Postcode** - M20 2UF

**EPC Rating** - C

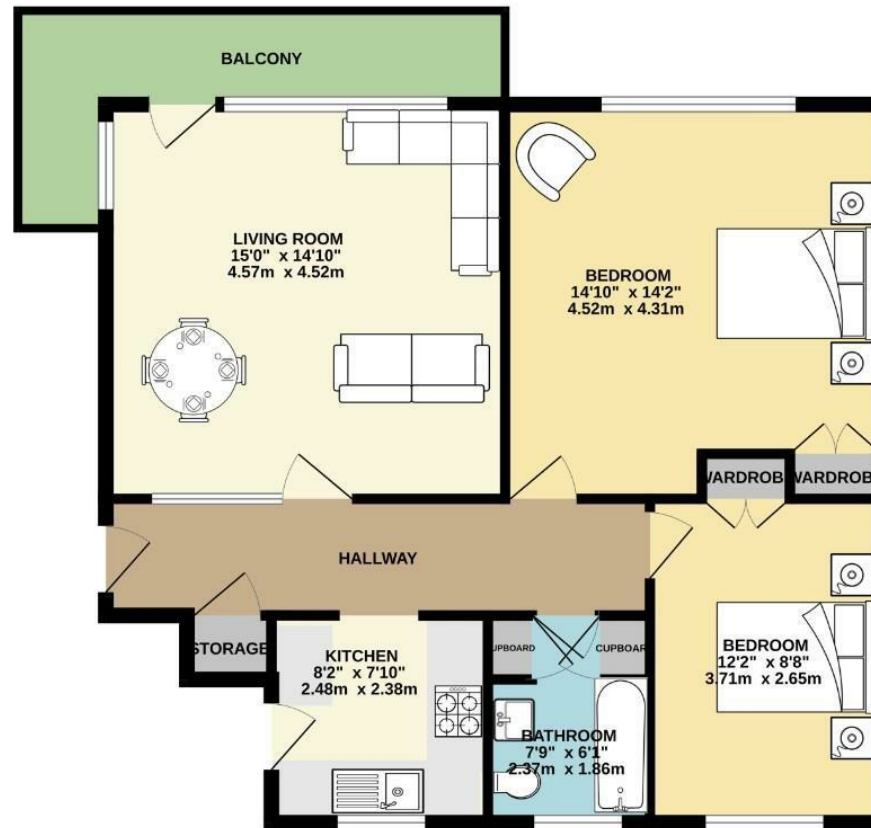
**Floor Area** - 746.00 sq ft

**Local Authority** - Manchester City Council

**Council Tax** - B



FIRST FLOOR  
746 sq.ft. (69.3 sq.m.) approx.



TOTAL FLOOR AREA: 746 sq.ft. (69.3 sq.m.) approx.  
Measurements are approximate. Not to scale. Illustrative purposes only.  
Made with Netopix ©2025



These particulars are believed to be accurate but they are not guaranteed and do not form a contract. Neither Jordan Fishwick nor the vendor or lessor accept any responsibility in respect of these particulars, which are not intended to be statements or representations of fact and any intending purchaser or lessee must satisfy himself by inspection or otherwise as to the correctness of each of the statements contained in these particulars. Any floorplans on this brochure are for illustrative purposes only and are not necessarily to scale.

Offices also at: Wilmslow, Macclesfield, Hale, Sale, Chorlton, Glossop, Manchester & Salford

757-759 Wilmslow Road, Didsbury Village, Manchester

0161 445 4480

didsbury@jordanfishwick.co.uk  
www.jordanfishwick.co.uk